

Active Rac1 Monoclonal antibody
Catalog Number:NL23001

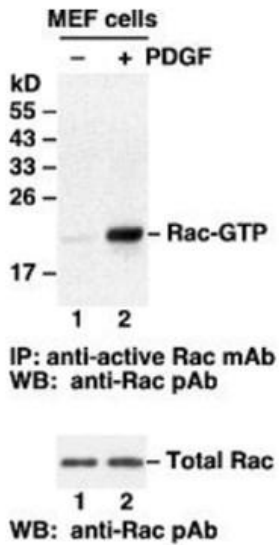
Product Uses Include

Analysis of in vivo Rac1 activation levels
Detection of compounds and proteins that enhance Rac1 activity
Detection of compounds and proteins that inhibit Rac1 activity
The activity of Rac1 in cells (tissues) was studied qualitatively

Product Description

Description	Anti-Active Rac1 Mouse Monoclonal Antibody
Another Name	Anti-Rac1-GTP Mouse Monoclonal Antibody
Catalog Number	NL23001
Size:	30 µl
Tested Applications:	IP , IHF IHC
Cited Applications:	IP , IHC , IF , FC ICC ICF IHF
Tested Reactivity:	Human , mouse Rat
Cited Reactivity:	Human , mouse Rat
Gene Symbol:	RAC1
Immunogen :	Recombinant full length protein of active Rac1
Concentration:	1mg/ml
Host/Isotype:	mouse/IgM
Class:	monoclonal
Type:	Antibody
Predicted mv:	21KDa
Observed mv:	21KDa
Uniprot:	p63000
Constituents:	PBS (without Mg ²⁺ and Ca ²⁺), pH 7.4, 150 mM NaCl, 50% glycerol
Storage Conditions:	Store at -20°C for one year after shipment
Background:	Small GTPases are a super-family of cellular signaling regulators. Rac belongs to the Rho sub-family of GTPases That regulate cell motility, cell division, and gene transcription.GTP binding increases the activity of Rac, and the hydrolysis of GTP to GDP renders it inactive. GTP hydrolysis is aided by GTPase activating proteins (GAPs), while exchange ofGDP for GTP is facilitated by guanine nucleotide exchange factors

Tested Applications: IP/WB

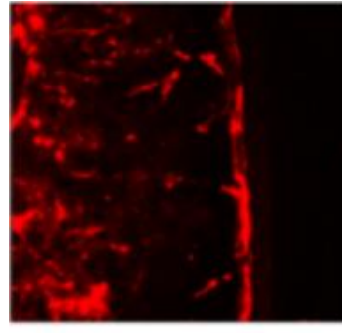
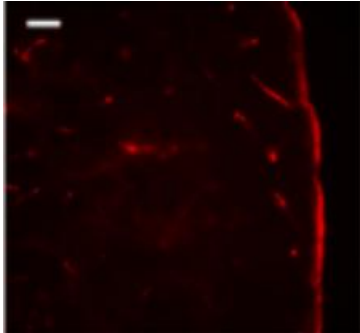


Top lane1: MEF 细胞裂解物 (500ul, 1mg/ml) 与 ProteinA/G 和 Anti-Rac1-GTP Monoclonal Antibody (1ul, 1mg/ml Cat # 23001) 进行孵育, 用 Anti Rac1 rabbit polyclonal antibody (稀释比例, 1:1000, Cat # 24001) 进行蛋白印迹分析。

Top lane2: PDGF 处理的 MEF 细胞裂解物 (500ul, 1mg/ml) 与 ProteinA/G 和 Anti-Rac1-GTP Monoclonal Antibody (1ul, 1mg/ml Cat# 23001) 进行孵育, 用 Anti Rac1 rabbit polyclonal antibody (稀释, 1:1000, Cat # 24001) 进行蛋白印迹分析。

The bottom panel (1,2): MEF 细胞裂解物 (25ul, 1mg/ml), 用 Anti Rac1 rabbit polyclonal antibody (稀释 1:1000, Cat # 24001) 进行蛋白印迹分析。

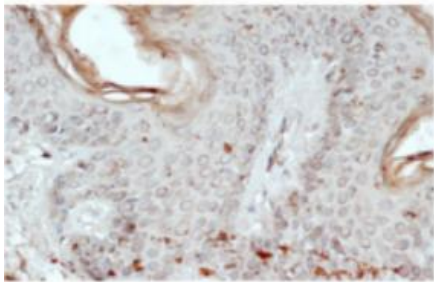
Tested Applications: IHF



正常鼠脑冰冻切片: 甲醛固定后, OCT 包埋, 30%蔗糖脱水, 通透, BSA 封闭, 4°C 用 Anti-Rac1-GTP Monoclonal, Antibody (Cat # NL23001) 1 : 200 稀释孵育过夜

AT53 转基因鼠脑冰冻切片: 甲醛固定后, OCT 包埋, 30%蔗糖脱水, 通透, BSA 封闭, 4°C 用 Anti-Rac1-GTP Monoclonal, Antibody (Cat# 23001) 1 : 200 稀释孵育过夜.

Tested Applications: IHC



normal skin

正常人组织切片: 4°C 用 Anti-Rac1-GTP Monoclonal Antibody (Cat# NL23001) 1:100 稀释孵育过夜